

# SPEC SHEET + MEASUREMENTS

**SPORT-TEK**

## Sport-Tek® Halftime Raglan Tee. ST6040

### Product photo



Show off your team spirit with this fashion-inspired tee.

- 4.5-ounce, 60/40 combed ring spun cotton/polyester
- 1x1 rib neck
- Tear-away label
- Self neck tape
- Raglan sleeves

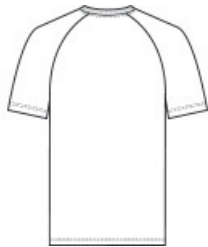
### CARE INSTRUCTIONS

Machine Wash Cold With Like Colors. Non-Chlorine Bleach When Needed. Tumble Dry Low. Cool Iron If Necessary.

### Sketches



front



back

# SPEC SHEET + MEASUREMENTS



Sport-Tek® Halftime Raglan Tee. ST6040

## PRODUCT MEASUREMENTS

	XS	S	M	L	XL	2XL	3XL	4XL
Body Length at Back	27 1/2	28 1/2	29 1/2	30 1/2	31 1/2	32 1/2	33	33 1/2
Chest	18	19 1/2	21	22 1/2	24	25 1/2	27 1/2	29 1/2
Raglans and Dolmans Sleeve Length	16 3/4	17 1/2	18 1/4	19	19 3/4	20 1/2	21 1/4	22

**Body Length at Back:** Measured from high point shoulder to finished hem at back.

**Chest:** Measured across the chest one inch below armhole when laid flat.

**Raglans and Dolmans Sleeve Length:** Measure from neck edge to finished hem.

## SIZE CHARTS

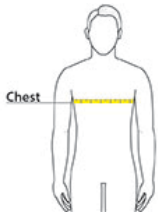
	XS	S	M	L	XL	2XL	3XL	4XL
Chest	32-34	35-37	38-40	41-43	44-46	47-49	50-53	54-57

# SPEC SHEET + MEASUREMENTS



Sport-Tek® Halftime Raglan Tee. ST6040

## HOW TO MEASURE



**CHEST**  
Measure under the arm and around the fullest part of the chest with arms down, keeping tape horizontal.

## COLORS



Black  
PMS BLACK  
C



Black/ Vintage  
Heather  
PMS BLACK  
C



Deep Red  
PMS 201C



Ecru



True Navy  
PMS 533C



True Royal  
PMS 7687C



Vintage  
Heather  
PMS 4195C



Vintage  
Heather/ Ecru  
PMS 4195C



White